

KODAK PROFESSIONAL

The World's Best Professional Films



© Ryan Muirhead

I found the versatility of the new PORTRA 160 film simply astounding. So many elements of it make my job easier.
- Ryan Muirhead



More than 130 Years of Continuous Innovation

Kodak Professional Film

KODAK PROFESSIONAL

The world's most comp

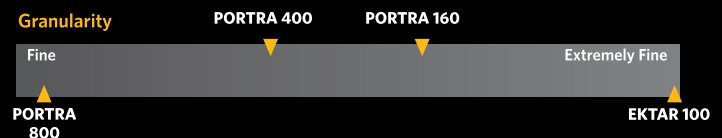
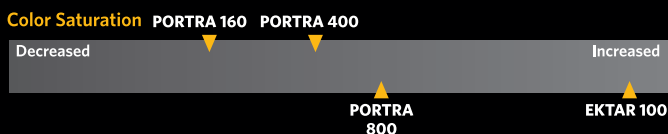


PORTRA 160 is amazing... one of my very favorite KODAK films. The natural color and skin tones of this film are absolutely superb.

- Tanja Lippert

I love the warm vibrant tones I get with the new PORTRA 400. It renders wonderfully under a variety of lighting conditions both in the studio and in natural light. The grain is also exceptionally fine for a 400 speed film!

- Ryan Muirhead

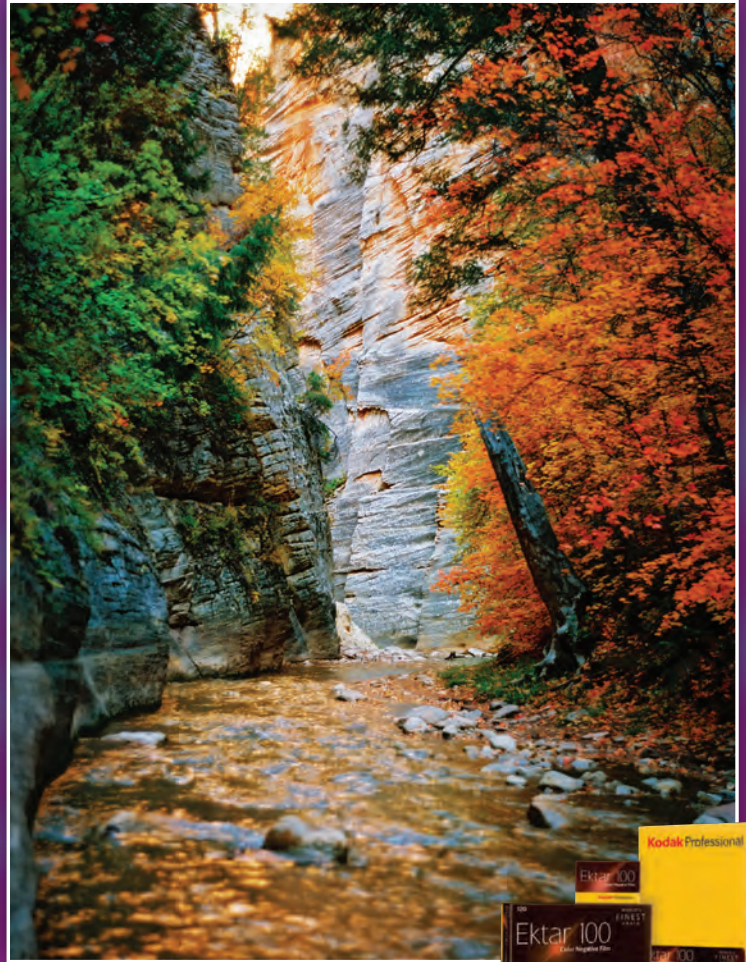


Kodak Professional Film

Color Negative Films comprehensive film portfolio



© Jonathan Canlas



© The Brothers Wright



I love the contrast and saturation of PORTRA 800; it's fantastic without being overbearing or compromising detail in highlights and shadows. The color rendition in virtually every lighting situation is ideal — whether I am shooting people, landscapes or travel work. I love the fact that there is no visible grain — none! And for someone who scans film in-house, it could not be easier to scan in terms of color and density.

- Jonathan Canlas

EKTAR is the most versatile emulsion that we have ever utilized for medium format environmental portraiture, fine art documentary in 35mm, or for our large format experimental cameras. Whether you are considering the vibrant gamut of colors that can be pulled from the dullest lens and lighting situation, or the dynamic scenes it captures from the deepest of shades to the golden hues on the surface of the sun, EKTAR is the most spectacular, fine grain, color negative film ever designed.

- The Brothers Wright



KODAK PROFESSIONAL Films

For more information, go to www.kodakalaris.com/go/profilms or visit your dealer.

Color Negative



- PORTRA 160**
- Smooth, natural skin tones
 - Extremely fine grain
 - Ideal choice for portrait, fashion, and commercial work



- PORTRA 400**
- World's finest grain at 400 speed
 - Spectacular skin tones plus superb color saturation
 - Terrific results over a wide range of lighting conditions



- PORTRA 800**
- Ideal for long lenses and low light
 - For enhanced color and natural skin tones
 - Very fine grain



- EKTAR 100**
- World's finest-grain color negative film
 - Ultra-vivid color and exceptional sharpness
 - Ideal for nature, travel and outdoor photography



© Sandra Coan

KODAK PROFESSIONAL
EKTACHROME E100



© Parker Fitzgerald

KODAK PROFESSIONAL
PORTRA 400

Color Reversal Film



- EKTACHROME E100**
- Virtually grain-less scans and enlargements
 - Clean, bright whites
 - Moderately enhanced color
 - Neutral tone scale
 - Outstanding skin tone reproduction

Black & White



- T-MAX 400**
- World's sharpest 400-speed black-and-white film
 - World's finest-grain 400-speed black-and-white film
 - Additional speed for low light and fast action
 - Pushability up to EI 1600



- T-MAX 100**
- World's finest-grain 100-speed black-and-white film
 - Extremely high sharpness
 - Very high resolving power
 - Optimal for enlargement



- TRI-X 400**
- World's best-selling black-and-white film
 - Classic grain structure
 - Wide exposure latitude
 - Great for low light and action
 - Maximum pushability to EI 1600



- TRI-X 320**
- Same features as TRI-X 400 Film but available in sheet formats
 - Maximum pushability to EI 1250



- T-MAX P3200**
- High to ultra-high speed
 - Great for street and night photography



© Julia Galdo and Cody Cloud

KODAK PROFESSIONAL
PORTRA 400



© Christian Ward

KODAK PROFESSIONAL
PORTRA 800



© Travis Lovell

KODAK PROFESSIONAL
T-MAX 100



© Michael Crouser

KODAK PROFESSIONAL
TRI-X 400



© Trev Lee / @trevlee

KODAK PROFESSIONAL
T-MAX P3200



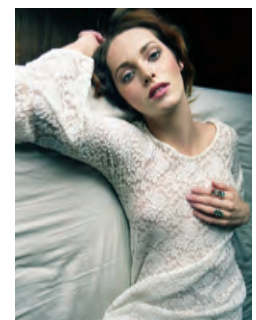
© Caroline Tran

KODAK PROFESSIONAL
PORTRA 800



© John Sexton

KODAK PROFESSIONAL
T-MAX 400



© Jeff Yeats

KODAK PROFESSIONAL
PORTRA 160

Kodak alaris

KODAK PROFESSIONAL Film App

