

**PENTAX**

# Spotmeter V

## The Pentax Spotmeter V for Precision Exposure Metering

For highly accurate exposure metering, use the Pentax Spotmeter V.

One of the keys to good photography is accurate exposure metering. This is especially true in professional circles where reversal color film requiring an exposure accuracy of 1/3rd of an f/stop is often employed, and in TV and movie film making where subject illumination has to be measured by spot metering methods. The metering angle in ordinary cameras is about 50°, and only one exposure reading is produced. Pentax Spotmeters have a very small metering angle of only 1°. Consequently, they can measure many different parts of the field to be photographed. They can also give a rapid indication of the amount of contrast. When the spot is moved quickly back and forth between the brightest and the darkest areas, the needle deflections will be greater for the stronger contrasts, and smaller for the weaker contrasts.

The IRE scale is used to ensure that the amount of needle deflection (indicating degree of subject contrast) does not exceed the maximum reproducible contrast ratio of the film being used (1:32 for reversal film, or 5 EV steps).

The Pentax Spotmeter V incorporates a single lens reflex optical system, constituting the ideal in precision exposure metering. The subject area covered by the very small metering angle of 1° (equivalent to the angle used by an ultra-telephoto 2000mm lens) is indicated by a small circle in the pentaprism viewfinder. The brightness of even minute detail in the subject field can be measured easily and quickly (no need to approach the subject). The photosensitive element used in the Spotmeter V is a silicon photo diode (SPD) with exceptional performance, even in low levels of light, this being one of the reasons why the measuring range has been expanded to EV1-19. Three 1.5v (Eveready S76) silver batteries in the power supply provide very stable voltage, a prerequisite for highly accurate measuring capability. The single linear meter scale in the viewfinder makes needle deflections very easy to read, and an IRE index scale can be read off directly from EV values on the side dial. The push button meter switch ensures that the batteries are not consumed unnecessarily. With the vast technical know-how of the makers of the Pentax Spotmeter V, it has consistently advanced, adding one improvement upon another. Whether it be commercial filming, night scenes, the stage, or the TV studio, no other exposure meter comes anywhere near the Spotmeter V.

*Specifications on next page.*

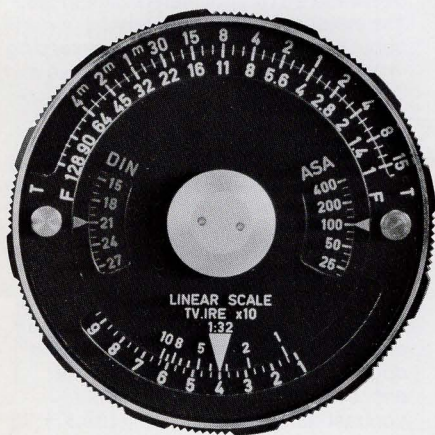
Cat. No.

**36130** Spotmeter V w/Case

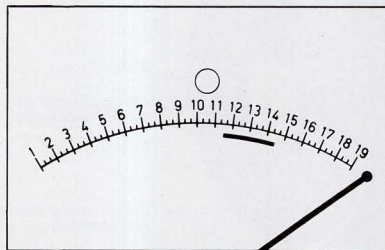


# PENTAX

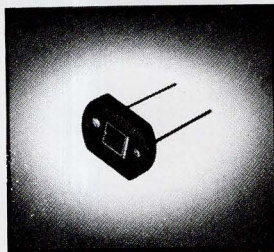
## Spotmeter V



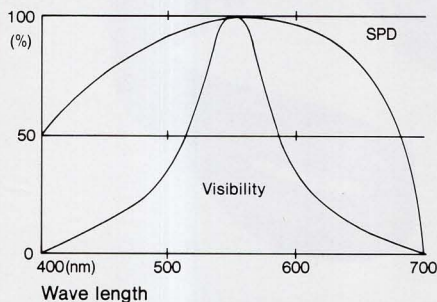
When the EV reading has been set, the proper exposure combination will be indicated on the two scales at the top of the calculator dial. The "T" scale indicates shutter speeds, the "F" scale indicates lens aperture (f-stop).



The EV scale as seen through the viewfinder.



The high-performance SPD photosensitive cell (silicon photo diode) installed in the Spotmeter V.



The Spotmeter V SPD spectroscopic sensitivity.

### Specifications

#### Measuring Ranges:

EV1-19, ASA 6-6400 (DIN 9-39), aperture f1-f128, shutter speeds 1/4000 sec.-4 mins., scales marked 1/3rd EV increments from 1-19.

#### Measuring Angle:

Circle of 1° of arc in center of finder.

#### Measuring Distances:

From about 1.5m to infinity — fixed focal length. (Focusing down to about 3 ft. (1 meter) possible by turning the eyepiece).

#### Measuring Method:

Spot measuring of reflected light. (Meter switches on when button pressed). EV direct reading. IRE scale.

#### Photosensitive Cell:

Silicon photo diode (SPD)

#### Power Supply:

Three 1.5v silver batteries (Eveready S76 or equivalent).

#### Battery check:

Battery check indicated in viewfinder.

#### Viewfinder:

Single lens reflex pentaprism type, giving erect projected image. Fresnel lens, field of view 17' horizontal and 12' vertical, 21' diagonal. Magnification 1.5X. Eyepiece correction 0~ -1 diopter. Scale illumination button provided.

#### Filter Accessory Size:

46mm

#### Calibration:

Zero adjustment screw

#### Weight:

15.9 oz. (450g) with batteries.

#### Dimensions:

62mm W x 163mm H x 127mm L.

2.5"x6.4"x5"

Width of grip 34mm (1.3").

#### Accessories:

Accepts 46mm filter, tripod socket, batteries, wrist strap, lens cap and case.